

June 2025



Transport enabling growth and housing

Midlands Rail Hub: building the homes we need



“

“Birmingham is one of the most complex and congested parts of the British railway network. Currently, the railway through central Birmingham is working at full capacity and is not equipped to meet the passenger demands of the future.

“Midlands Rail Hub proposes to address the capacity issue by putting more trains into Birmingham Moor

Street station, adjacent to the new HS2 station at Curzon Street.

“But the scheme can and must do more than that; it must be an enabler for growth. Transport can help make the Government’s vital mission, building the homes we need, a reality.

“Midlands Rail Hub will help that mission, ensuring people have the

connections, communities and homes they and the country needs. To make those communities flourish, we need strong and better access to well paid jobs and amenities. Midlands Rail Hub sits at the heart of that.

“This report will show how our flagship project could be a building block in that story, helping to deliver a national priority.”



Maria Machancoses
CEO of Midlands Connect



The Government's housing mission

Housing is a top priority for the nation, with aims to build 1.5m new homes by the end of the parliament. Government will do so by overhauling planning rules and removing red tape, accelerating decisions for major infrastructure projects.

“We’re taking immediate action to make the dream of homeownership a reality through delivering 1.5 million homes by the next parliament and rebuilding Britain to deliver for working people.”

Prime Minister, Keir Starmer

Economic watchdog, the Office for Budget Responsibility, forecast a 0.2% increase to GDP by 2029/30 due to Government’s planning reforms – worth around £6.8bn in today’s prices.

The New Homes Accelerator was established in 2024 to fast-track planning decisions for stalled housing sites, such as Worcester Parkway. These delayed developments amount to more than 14,000 homes in total.

Network Rail is also supporting Government’s targets by creating a new property company, which will see a further 40,000 homes built.

“For far too long the delivery of tens of thousands of new homes has been held back by a failure to make sure the development system is working as it should.

“This Government has a moral obligation to do everything within our power to build the homes that people desperately need and we won’t hesitate to intervene where we need to.

“Our New Homes Accelerator will quickly identify blockages, fix problems and support local authorities and developers to get shovels in the ground.”

Deputy Prime Minister, Angela Rayner

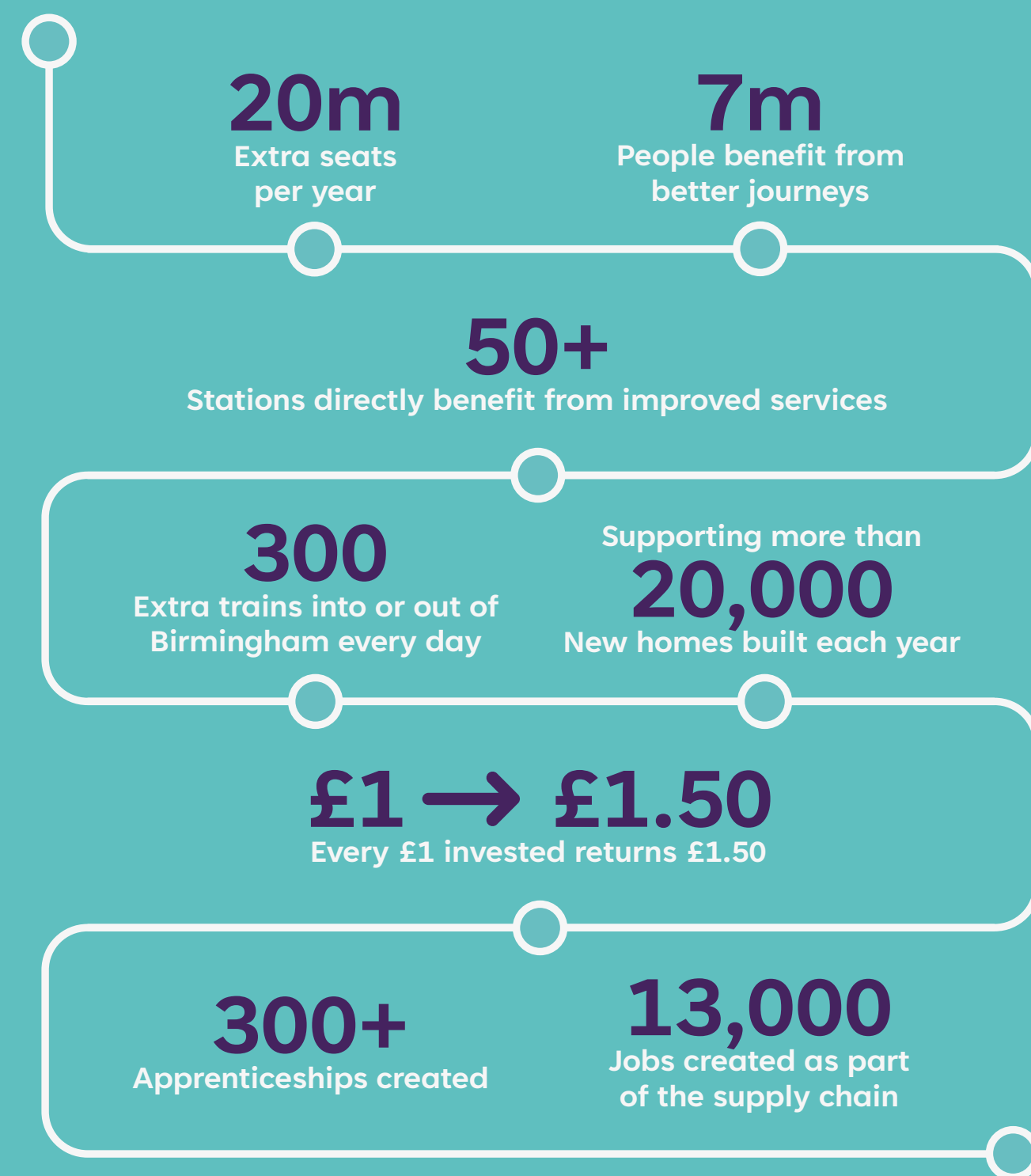
What is Midlands Rail Hub?

Midlands Rail Hub is a £1.75bn blueprint for faster, better and more frequent connections across the Midlands. The scheme will add up to 300 additional trains on the rail network per day into or out of Birmingham and provide faster, more frequent or new rail links for over 50 locations including: Nottingham, Leicester, Bromsgrove, Nuneaton, Worcester, Hereford and Cardiff.

Midlands Rail Hub will build two 'chords' at Bordesley, just east of Birmingham City Centre, as well as 10+ engineering interventions throughout the region – allowing us to offer up to 20 million extra seats for passengers through the Midlands and beyond.

- The West Chord: consists of improvements between Bordesley and Moor Street, allowing access to Birmingham Moor Street from South- West and Wales, allowing additional trains towards Worcester, Hereford, Bristol and Cardiff.
- The East Chord: creates an access to Birmingham Moor Street from the East Midlands, allowing direct access for trains from cities such as Leicester, Derby and Nottingham.

Midlands Rail Hub at a glance



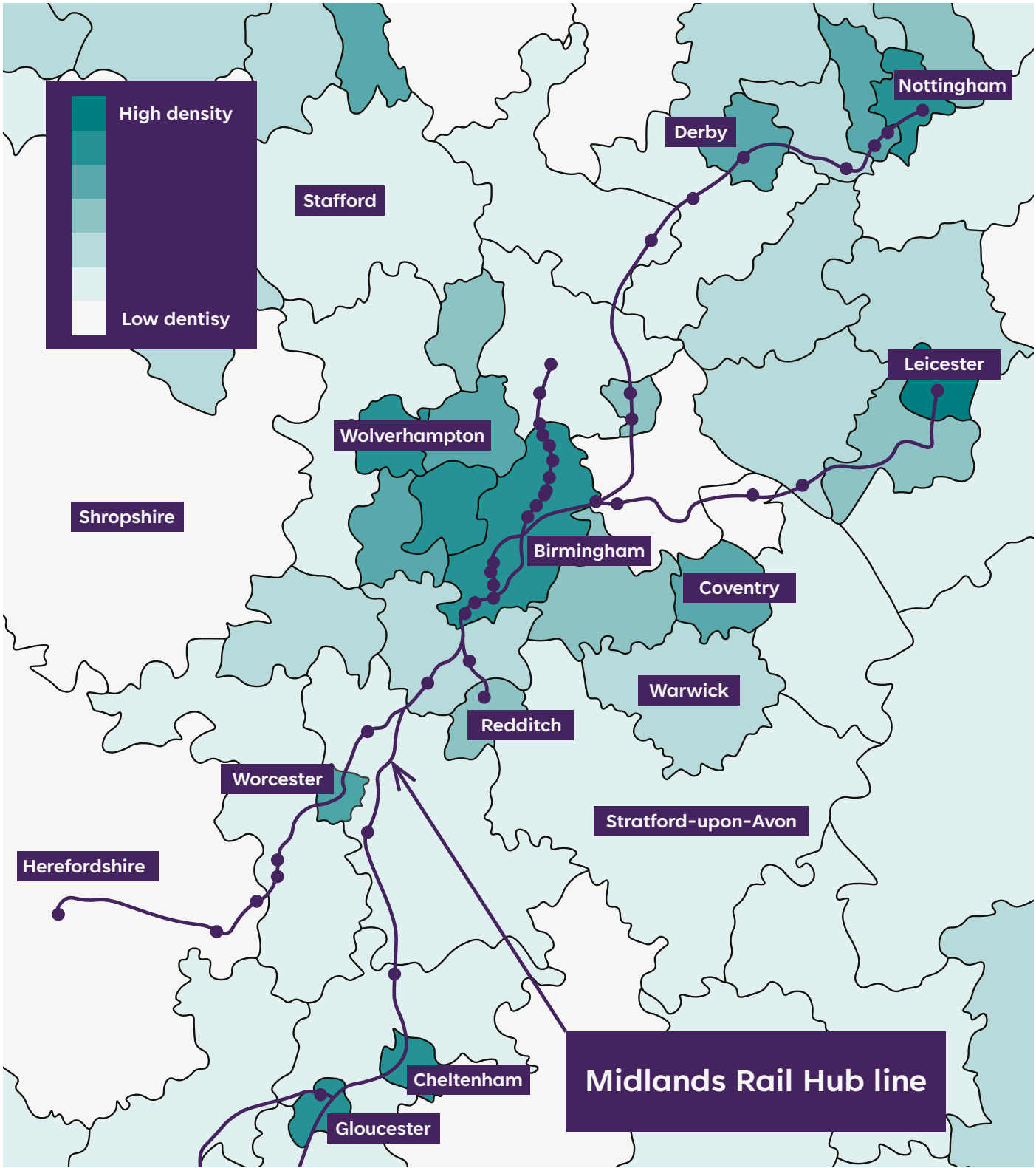


Housing need and Midlands Rail Hub

Midlands Rail Hub helps to facilitate new housing across large parts of the region. It does so by providing a sustainable means for people to access jobs, services and opportunities, including in our largest cities in the West and East Midlands. The table below illustrates this in more detail.

District(s)	Annual need
Gloucester, Cheltenham, Tewkesbury	2,123
Worcester, Malvern Hills, Wychavon	2,174
Herefordshire	1,363
Bromsgrove, Redditch	1,199
Birmingham	4,448
Lichfield	745
Tamworth, East Staffs	1,048
Derby, South Derbyshire	1,487
Nottingham, Broxtowe, Erewash	2,391
Nuneaton, Hinckley, North Warks	1,749
Leicester, Blaby, Oadby, Wigston	2,482
Total	21,210

Local housing annual need (density)



Case study: Worcestershire Parkway

This is a significant new development proposed to the southeast of Worcester, built around Worcestershire Parkway railway station. The area has existing rail links, with direct journeys to the North Cotswolds, Oxford, London, Worcester, Gloucester and Cardiff. However, frequencies are limited to hourly to each of these locations so capacity is limited. The town is also surrounded by the M5 and A44 so without an attractive rail service, many people would drive.

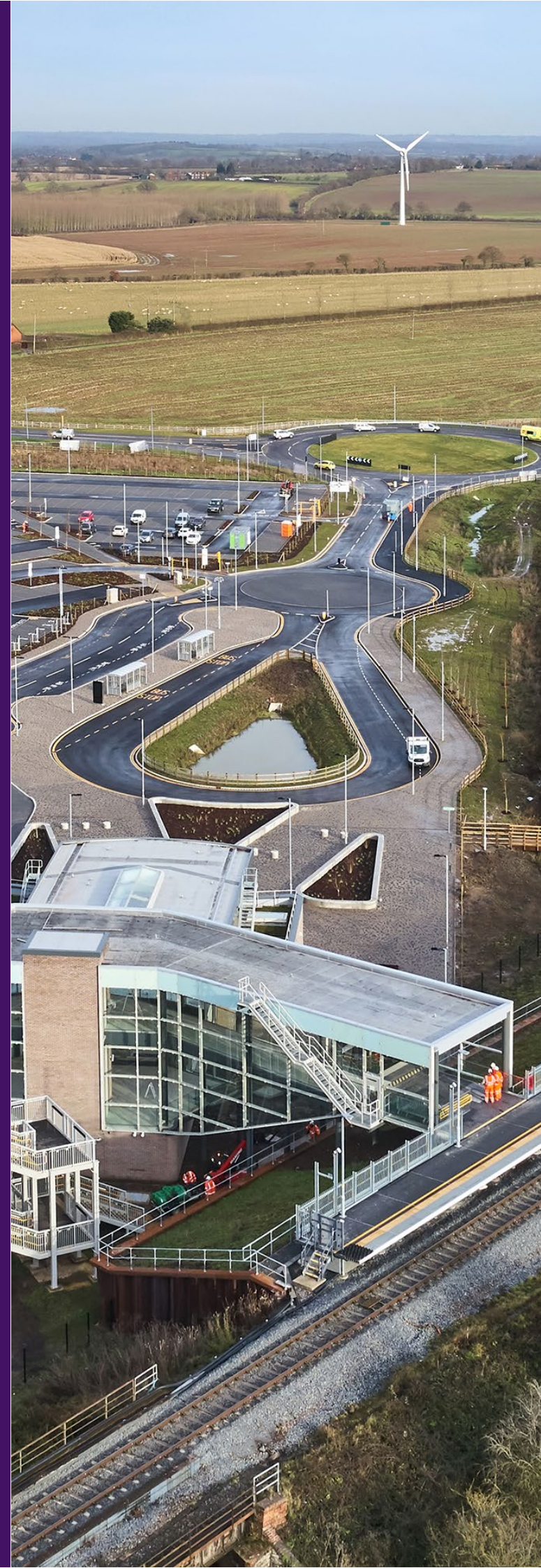
Worcestershire Parkway will deliver approximately 10,000 dwellings and 50 hectares of employment land, to be delivered in phases alongside adjoining neighbourhoods near Worcestershire Parkway railway station.

As part of the scheme, primary and secondary schools, alongside further education provision, will need to be delivered. Worcestershire Parkway will also support retail and community facilities such as health infrastructure, emergency, leisure and retail services.

What MRH will do for Worcestershire Parkway?

Midlands Rail Hub will add new train services to Worcestershire Parkway, giving more frequent services towards Birmingham, Cheltenham and Cardiff (alongside Bristol with interchange at Cheltenham). These are over and above the new services being added in May 2025. This will increase the commutable area for the new settlement, allowing the area to becoming more commutable to well paid jobs in Birmingham and thus boosting economic growth.

The scheme will also deliver 2 million extra seats a year for passengers and commuters.



“These proposals are so important for improving connections for the residents of Worcestershire. More services to Cardiff and Birmingham will create amazing opportunities for my constituents.”

Nigel Huddleston,
MP for Mid
Worcestershire

Case study: Ashchurch for Tewkesbury

Tewkesbury Borough in north Gloucestershire is the fastest growing borough outside London. It will see significant housing growth with the development of a Garden Communities new town project that has the potential for 10,000 homes on the doorstep of Ashchurch for Tewkesbury Station. The Cotswold Designer Outlet will also open in Ashchurch in 2025, bringing an estimated 3.5m annual visitors from across the Midlands and southwest, while economic development through attracting strategic industries is a vital part of the project.

Sustainable public transport is core to its success. Ashchurch for Tewkesbury is currently served by hourly rail services from Worcester to Bristol (via Cheltenham and Gloucester), but there are only very limited services to and from Birmingham, largely confined to the peak periods.

The opportunity for Midlands Rail Hub to unlock this development is clear, with a much- expanded package of rail services from Ashchurch for Tewkesbury to ensure that rail is at the forefront of sustainable transport to and from this development in the future. Developments will be connected by well-planned shared infrastructure for secondary schools, a medical centre, cycle paths and transport improvements. Improving access to the station

as well as connecting developments by active travel and local transport improvements will enable Midlands Rail Hub to support local residents. The local economy leads in advanced engineering and manufacturing, agri-tech and cyber-security, and the infrastructure will support economic growth and employment in these key sectors.

What MRH will do for Ashchurch?

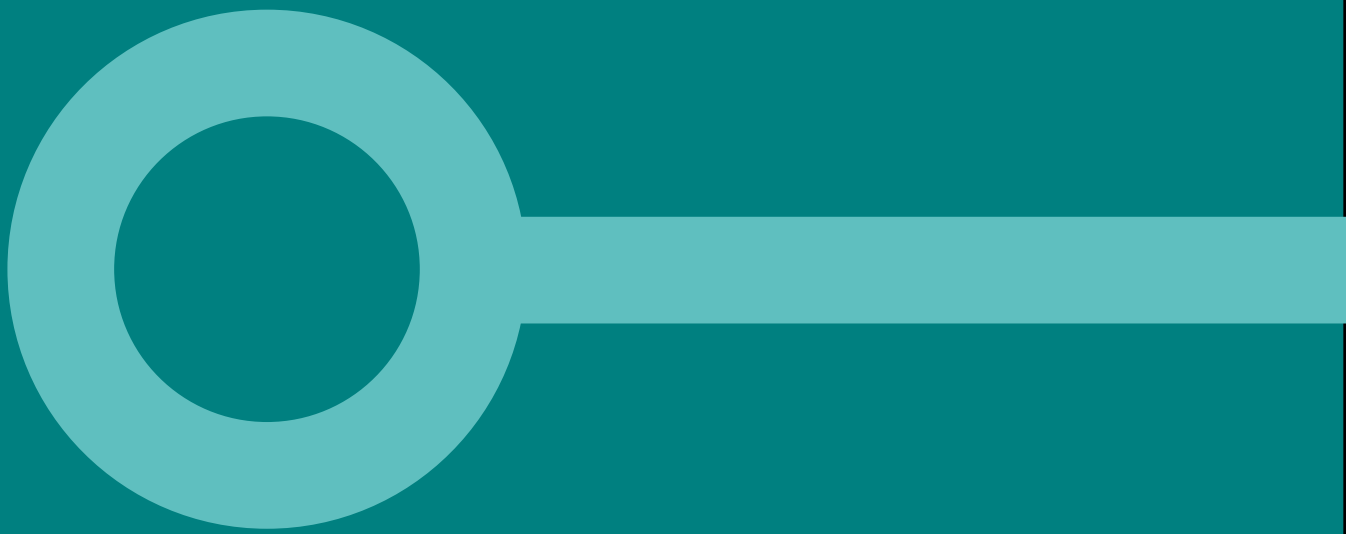
With Midlands Rail Hub in place, Ashchurch could be served by an additional two trains each hour to and from Birmingham, a step change over the current handful of services (mostly peak time) which currently operate towards the West Midlands.



“It is essential for the housing and economic development at Ashchurch to have increased rail capacity, and it’s crucial for the strategic development of north Gloucestershire. Improving services will link Gloucestershire’s brilliance to the Midlands and the southwest. The growing population of Tewkesbury will benefit from vastly improved work and leisure opportunities.”

Cameron Thomas,
MP for Tewkesbury





midlandsconnect.co.uk

**Midlands
Connect.**